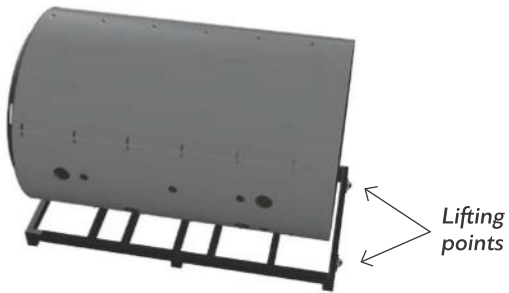


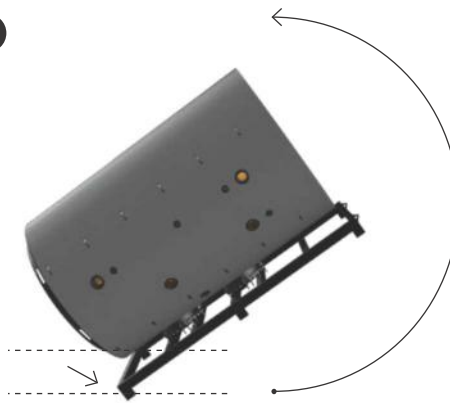
# LIFTING INSTRUCTIONS



01



02

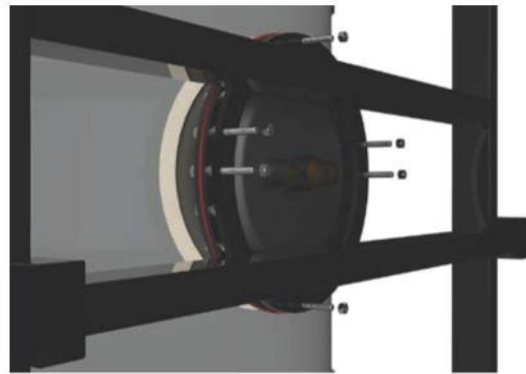


When lifting the tank, the bottom part of the metal transportation pallet shall ALWAYS touch the ground, as shown in the pictures

03



04



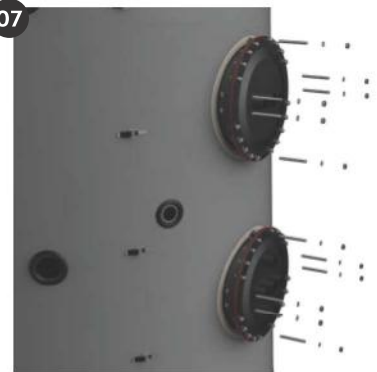
05



06



07



08



09



# INSULATION REMOVAL



01



When removing and replacing the insulating shell, please follow the order as specified in the following pictures. The part with the smallest size shall be placed last.

02



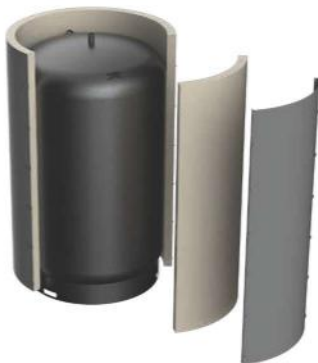
03



04



05



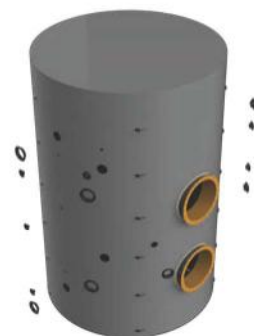
06



07



08



# EXCHANGER REMOVAL

