

.....  
**FOR HEAT PUMP SYSTEMS**  
.....

# **BUFFER TYPE TANKS**

## **40–500L**



# NEW TANKS SERIES BAC-0 & BLS-0

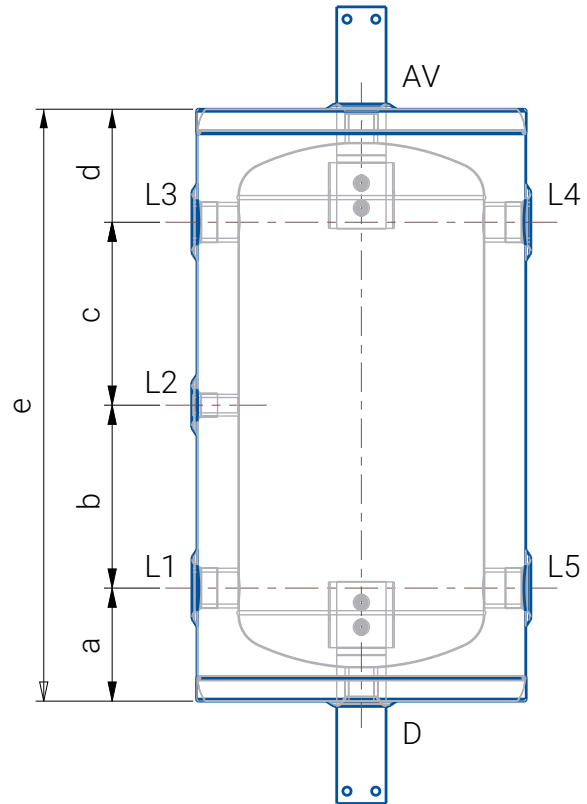
## SPECIALLY DESIGNED FOR HEAT-COLD PUMPS

The new tanks BAC-0 & BLS-0 are Buffer type tanks and available in capacities from 40 to 500L. They are offered with internal ENAMEL protection for storage of Domestic Hot Water (DHW), but also without enameling to use as a Buffer Tank CC (closed circuit) for integration to the central heating system.

They are designed for heat-cold pump systems, with the option to be installed horizontally or vertically.



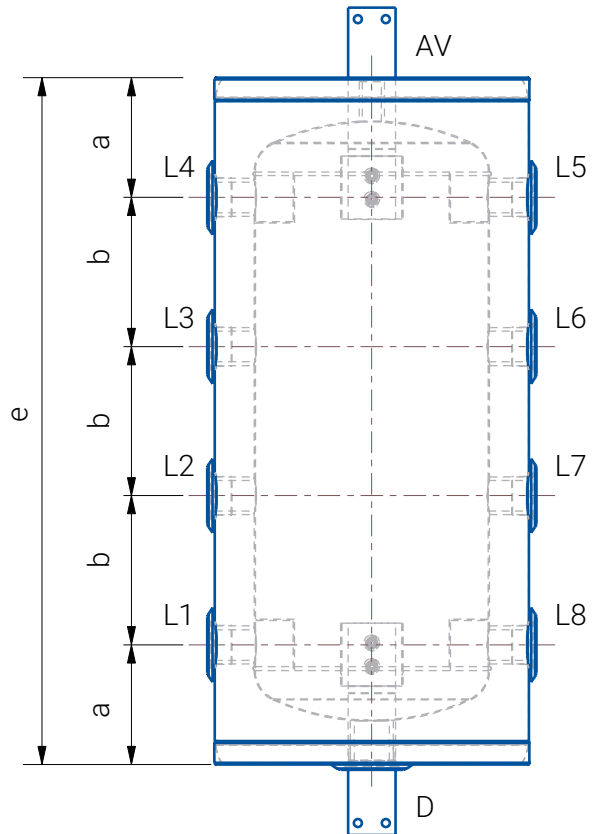
## BAC-0 40L



Capacity	L	41
Maximum operating temperature	°C	95
Tank material		Hot rolled metal sheet 2mm (EN 10025 according to DIN 17100)
Outer shell material		Pre-Painted (Ral 9006) galvanized metal sheet 0.5mm (EN 10204/2.2)
Insulation		Polyurethane Foam 48kg / m <sup>3</sup> (DIN 53420), self-extinguishing (DIN 4102)
Maximum pressure	bar	6
Outer diameter	mm	Ø400
Inner diameter	mm	Ø300
a	mm	137.5
b	mm	222.5
c	mm	222.5
d	mm	137.5
e	mm	720
L1, L3, L4 & L5		G 1¼"
L2		G ½"
AV (air vent)		G 1"
D (drain) *		G 1"

\* Suitable to install heating element

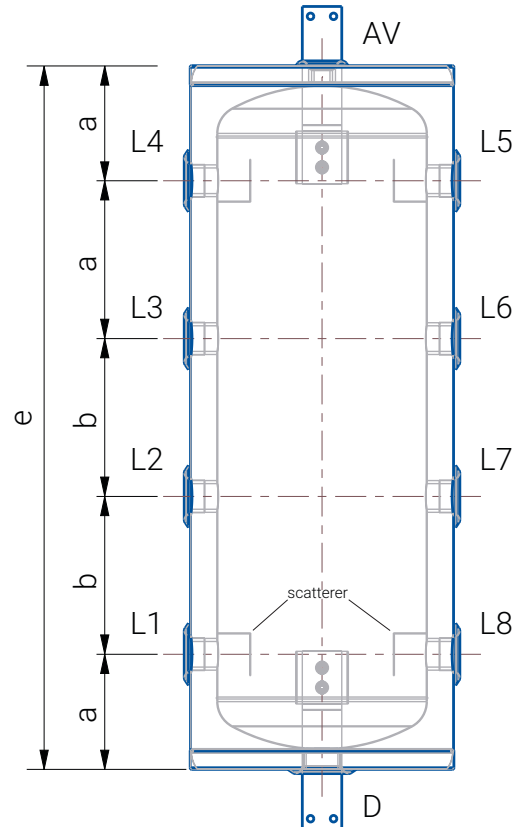
## BAC-0 60L



Capacity	L	52
Maximum operating temperature	°C	95
Tank material		Hot rolled metal sheet 2mm (EN 10025 according to DIN 17100)
Outer shell material		Pre-Painted (Ral 9006) galvanized metal sheet 0.5mm (EN10204 / 2.2)
Insulation		Polyurethane foam 48kg / m <sup>3</sup> (DIN 53420), self-extinguishing (DIN 4102)
Maximum pressure	bar	6
Outer diameter	mm	Ø400
Inner diameter	mm	Ø300
a	mm	152.5
b	mm	190
e	mm	875
L1,L2, L3, L4,L5,L6,L7 & L8	mm	G 1¼"
AV (air vent)	mm	G ¾"
D (drain) *		G 1½"

\* Suitable to install heating element

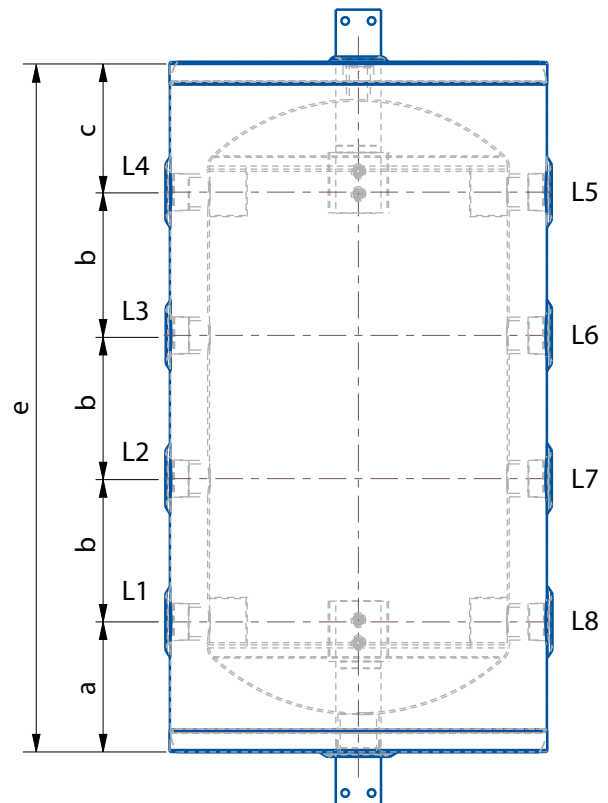
## BAC-0 80L



Capacity	L	80
Maximum operating temperature	°C	95
Tank material		Hot rolled metal sheet 2mm (EN 10025 according to DIN 17100)
Outer shell material		Pre-Painted (Ral 9006) galvanized metal sheet 0.5mm (EN10204 / 2.2)
Insulation		Polyurethane Foam 48kg / m <sup>3</sup> (DIN 53420), self-extinguishing (DIN 4102)
Maximum pressure	bar	6
Outer diameter	mm	Ø460
Inner diameter	mm	Ø360
a	mm	172,5
b	mm	190
e	mm	910
L1,L2, L3, L4,L5,L6,L7 & L8	mm	G 1¼"
AV (air vent)	mm	G 3/4"
D (drain) *		G 1½"

\* Suitable to install heating element

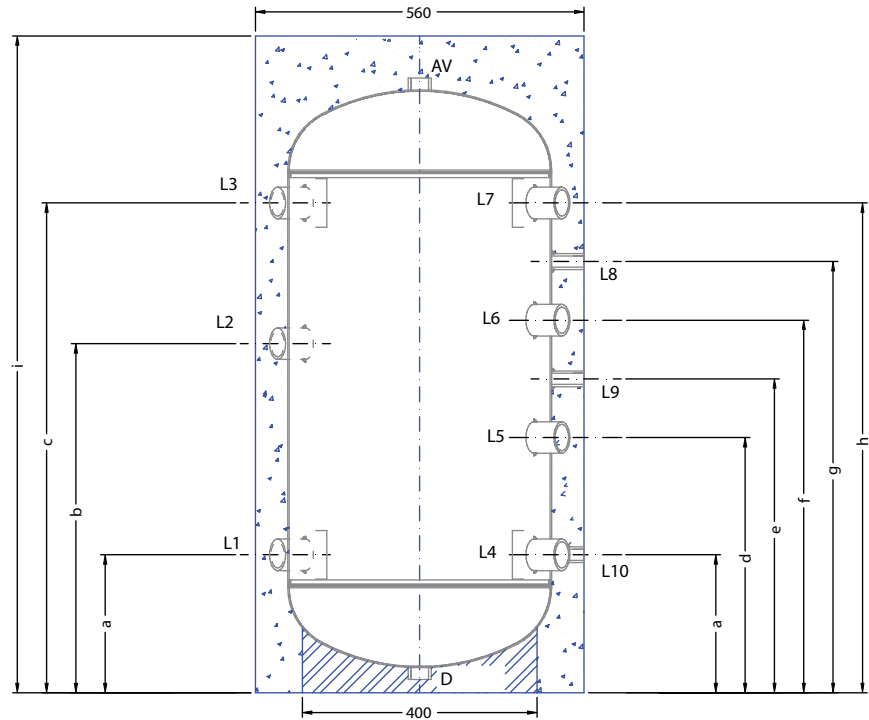
## BAC-0 100L



Capacity	L	92.5
Maximum operating temperature	°C	95
Tank material		Metal Sheet DC 2.5mm (EN 10025 according to DIN 17100)
Outer shell material		Pre-Painted (Ral 9006) galvanized metal sheet 0.5mm (EN10204 / 2.2)
Insulation		Polyurethane Foam 48kg / m <sup>3</sup> (DIN 53420), self-extinguishing (DIN 4102)
Maximum pressure	bar	8
Outer diameter	mm	Ø500
Inner diameter	mm	Ø400
a	mm	192.5
b	mm	190.0
c	mm	192.5
e	mm	960
L1, L3, L4, L5, L6, L7 & L8		G 1 ¼"
AV (air vent)		G ¾"
D (drain) *		G 1 ½"

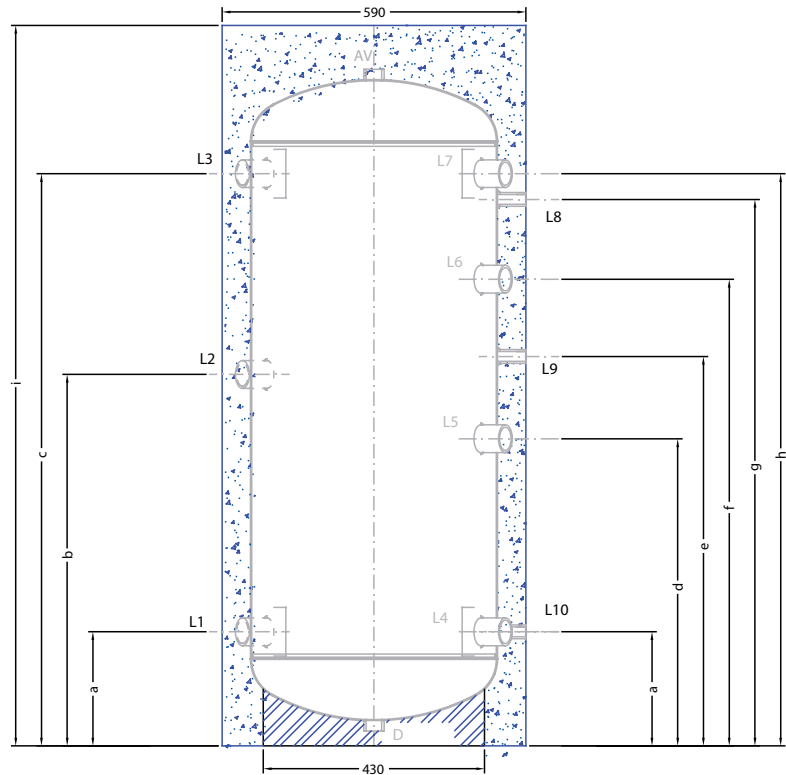
\* Suitable to install heating element

# BAC-0 150L



Capacity	L	144
Maximum operating temperature	°C	95
Tank material		Metal Sheet DC 2.5mm (EN 10025 according to DIN 17100)
Outer shell material		Pre-Painted (Ral 9006) galvanized metal sheet 0.5mm (EN10204 / 2.2) or PVC
Insulation		Polyurethane Foam 48kg / m <sup>3</sup> (DIN 53420), self-extinguishing (DIN 4102)
Maximum pressure	bar	8
Outer diameter	mm	Ø560
Inner diameter	mm	Ø450
a	mm	235
b	mm	595
c	mm	835
d	mm	435
e	<b>mm</b>	535
f	mm	635
g	mm	735
h	mm	835
i	mm	1120
L1,L2,L3, L4,L5,L6& L7		G 1 1/2"
L8,L9&L10		G 1/2"
AV (air vent)		G 1 1/2"
D (drain)		G 1 1/2"

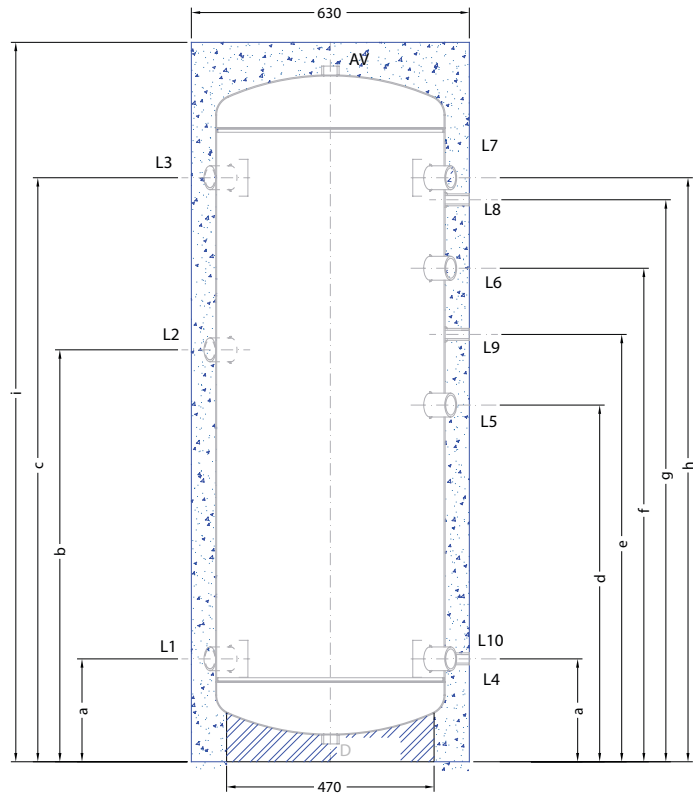
# BAC-0 200L



Capacity	L	204
Maximum operating temperature	°C	95
Tank material		Metal Sheet DC 2.5mm (EN 10025 according to DIN 17100)
Outer shell material		Pre-Painted (Ral 9006) galvanized metal sheet 0.5mm (EN10204 / 2.2) or PVC
Insulation		Polyurethane Foam 48kg / m <sup>3</sup> (DIN 53420), self-extinguishing (DIN 4102)
Maximum pressure	bar	8
Outer diameter	mm	Ø590
Inner diameter	mm	Ø480
a	mm	222
b	mm	722
c	mm	1112
d	mm	597
e	<b>mm</b>	757
f	mm	907
g	mm	1062
h	mm	1112
i	mm	1400
L1,L2,L3, L4,L5,L6& L7		G 1 1/2"
L8,L9&L10		G ½"
AV (air vent)		G 1 1/2"
D (drain)		G 1 1/2"

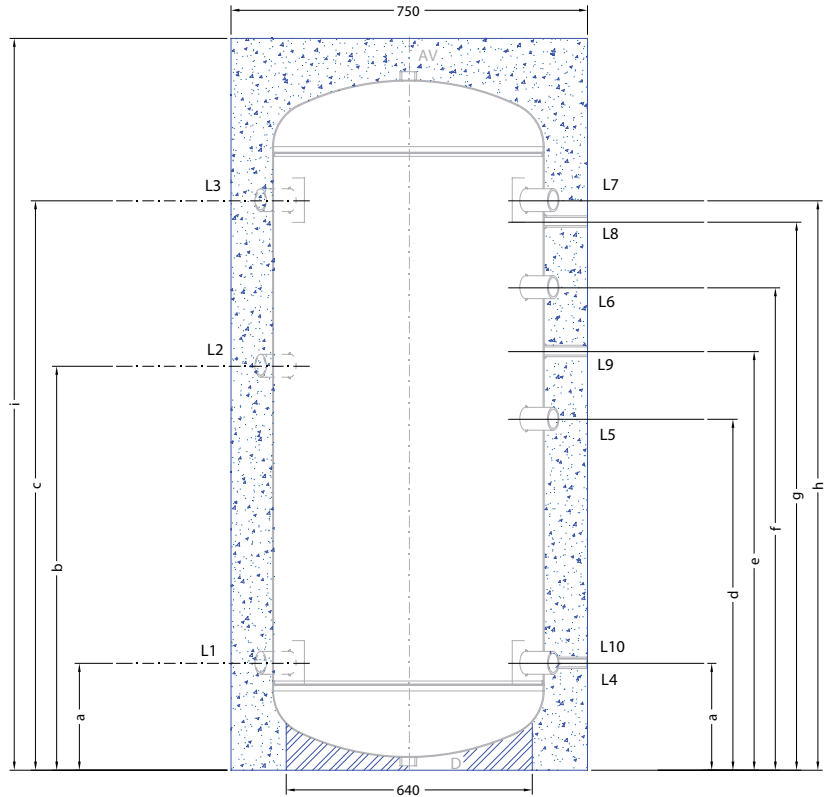


## BAC-0 300L



Capacity	L	298
Maximum operating temperature	°C	95
Tank material		Metal Sheet DC 2.5mm (EN 10025 according to DIN 17100)
Outer shell material		Pre-Painted (Ral 9006) galvanized metal sheet 0.5mm (EN10204 / 2.2) or PVC
Insulation		Polyurethane Foam 48kg / m <sup>3</sup> (DIN 53420), self-extinguishing (DIN 4102)
Maximum pressure	bar	8
Outer diameter	mm	Ø630
Inner diameter	mm	Ø520
a	mm	233
b	mm	933
c	mm	1323
d	mm	808
e	mm	968
f	mm	1118
g	mm	1273
h	mm	1323
i	mm	1630
L1,L2,L3, L4,L5,L6& L7		G 2"
L8,L9&L10		G ½"
AV (air vent)		G 1 1/2"
D (drain)		G 1 1/2"

## BAC-0 500L



Capacity	L	478
Maximum operating temperature	°C	95
Tank material		Metal Sheet DC 2.5mm (EN 10025 according to DIN 17100)
Outer shell material		Pre-Painted (Ral 9006) galvanized metal sheet 0.5mm (EN10204 / 2.2) or PVC
Insulation		Polyurethane Foam 48kg / m <sup>3</sup> (DIN 53420), self-extinguishing (DIN 4102)
Maximum pressure	bar	8
Outer diameter	mm	Ø750
Inner diameter	mm	Ø640
a	mm	251
b	mm	951
c	mm	1341
d	mm	826
e	<b>mm</b>	986
f	mm	1136
g	mm	1291
h	mm	1341
i	mm	1679
L1,L2,L3, L4,L5,L6& L7		G 3"
L8,L9&L10		G ½"
AV (air vent)		G 1 1/2"
D (drain)		G 1 1/2"



A

B

C

D

E

F

G

C